



INDUSTRIAL FLUID POWER COMPONENTS
AND SYSTEMS

SD03, 5, 7 & 8 SERIES

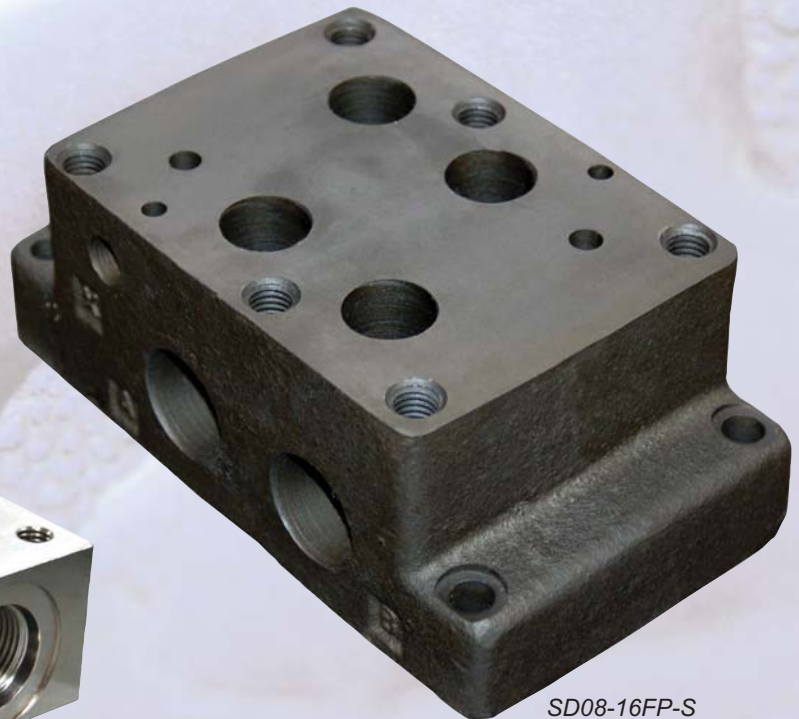
Subplates



SD03-6FP-S



SD05-8FP-S



SD08-16FP-S



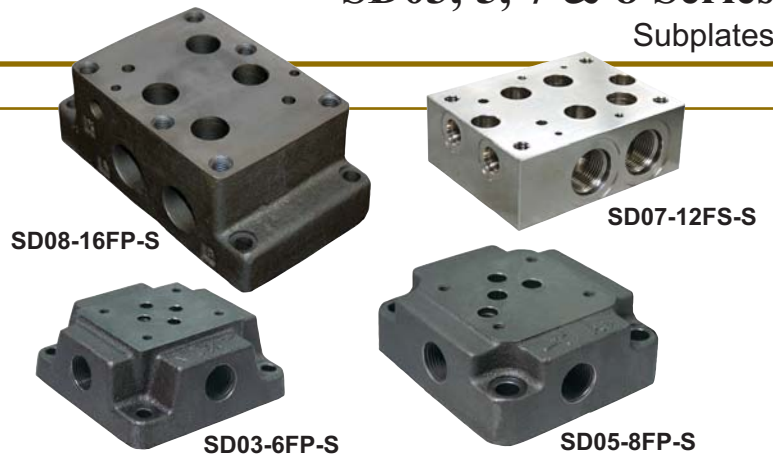
SD07-12FS-S



SD03, 5, 7 & 8 Series Subplates

Features

- Rugged Design:** Heavy duty subplates handle pressure shocks and severe applications.
- Easy Valve Replacement:** Subplate mounted valves allow for quick valve replacement without disrupting plumbing.
- New High Flow D05:** SD05H-16FS-S Subplates with two tank line connections to the D05 pattern.



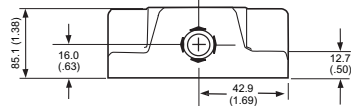
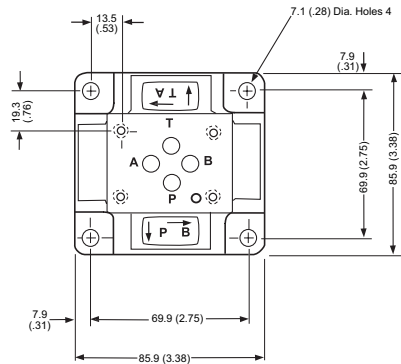
Specifications

Size	D03	D05	D07	D08
Mounting Surfaces: General Patterns		D05- Standard 		
Model Number				
Side Ports	SAE Ports: SD03-6FS-S NPT Ports: SD03-6FP-S	SD05-8FS-S SD05-8FP-S	SD07-12FS-S N/A	SD08-16FS-S SD08-16FP-S
Bottom Ports	SAE Ports: N/A NPT Ports: SD03-6FP-B	N/A SD05-8FP-B	SD07-12FS-B N/A	N/A N/A
Mounting Surface	NFPA: T3.5.1.MR1-F1984-03 ISO: ISO 4401-03	T3.5.1.MR1-F1984-D05 ISO 4401-05		T3.5.1.MR1-D08 ISO 4401-08
Nominal Flow Rates	5 gpm (19 lpm)	12 gpm (45 lpm)		50 gpm (190 lpm)
Material	Ductile Cast Iron	Ductile Cast Iron	Nickel Plated Steel	Ductile Cast Iron
Maximum Pressure	Cast Iron 5000 psi (350 bar) Aluminum (optional) 3000 psi (210 bar)			
Recommended Fluids	Petroleum Based Fluids- ISO VG32-68, Phosphate Ester, Most Vegetable Oils, Water Based Fluids to 40% Water			

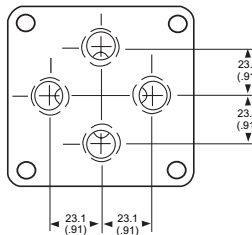
Dimensional Data

Units: mm/ (Inch)

Series SD03

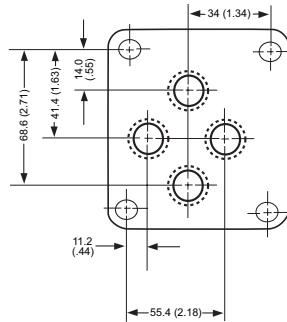
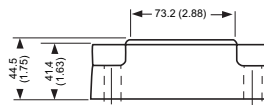
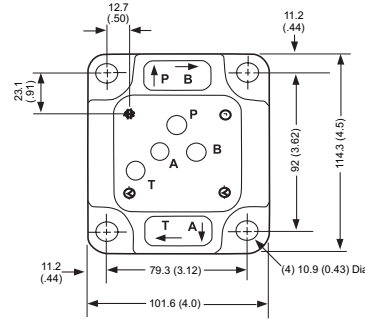


SD03-6F*S
Side Ported

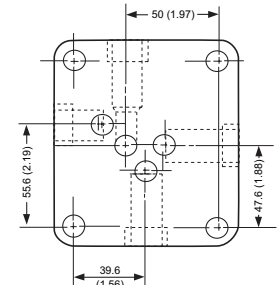
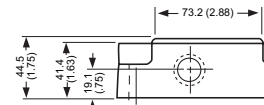
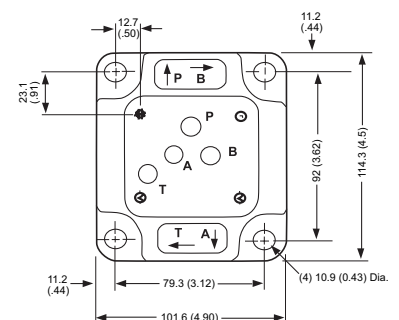


SD03-6FP-B
Bottom Ported

Series SD05

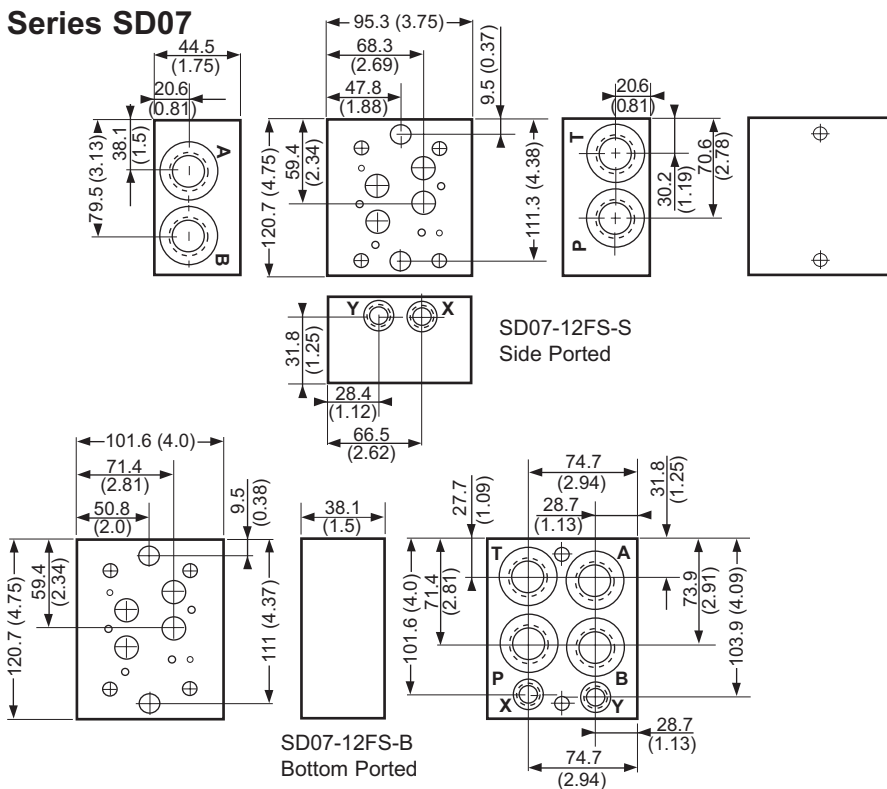


SD05-8FP-B
Bottom Ported

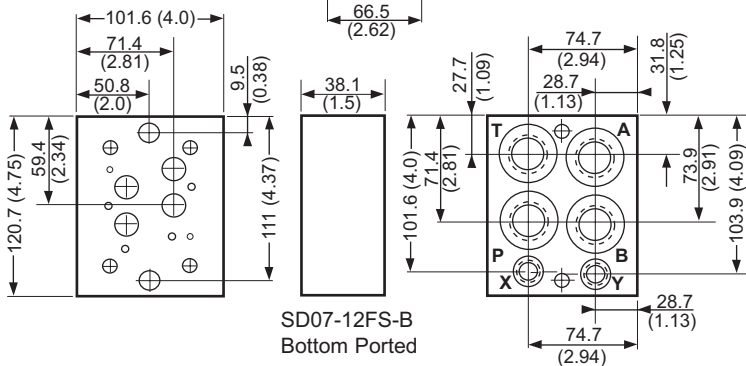


SD05-8F*S
Side Ported

Series SD07

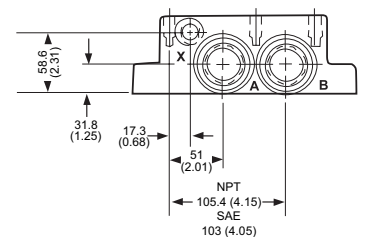
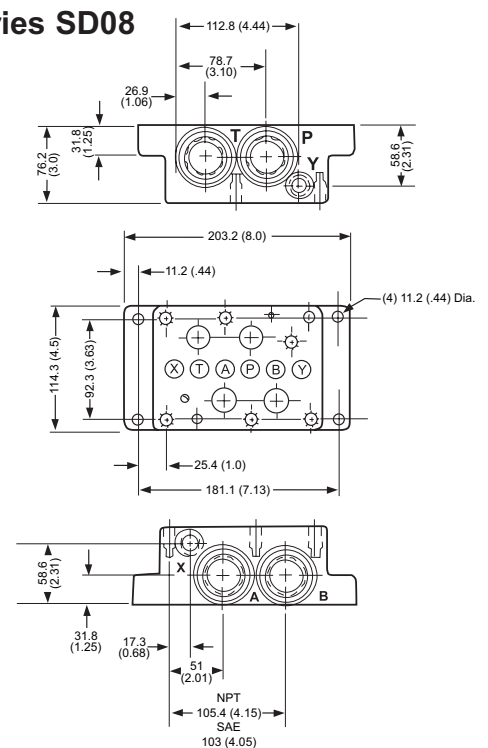


SD07-12FS-S
Side Ported



SD07-12FS-B
Bottom Ported

Series SD08

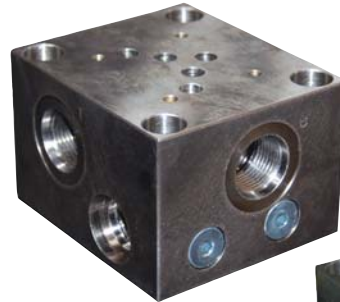
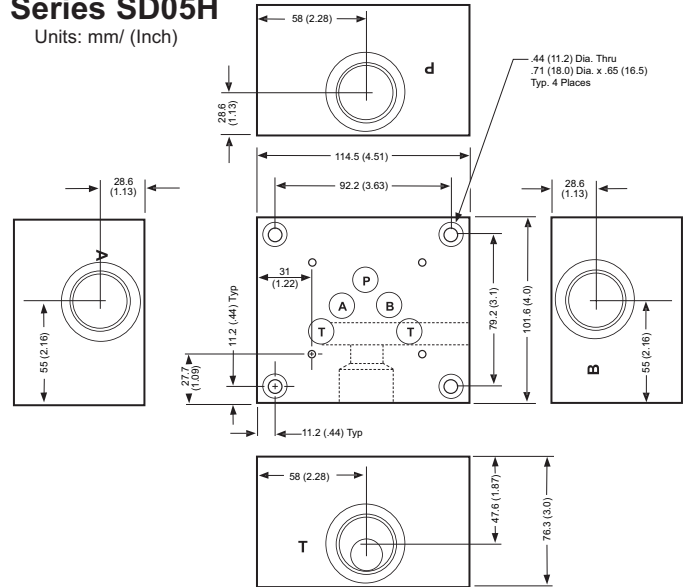


Dimensional Data

Size		D05
Mounting Surfaces: General Patterns		D05H- High Flow
Model Number		
Side Ports	SAE Ports	SD05H-12or16FS-S SD05H-12FS-C-S (w/ relief cavity)
	NPT Ports	N/A
Bottom Ports	SAE Ports	N/A
	NPT Ports	N/A
Mounting Surface	NFPA	T3.5.1.MR1-D05
	ISO	ISO 4401-05
Nominal Flow Rates		25 gpm (95 lpm)
Material		Nickel Plated Steel
Recommended Fluids		Petroleum Based Fluids- ISO VG32-68, Phosphate Ester, Most Vegetable Oils, Water Based Fluids to 40% Water

Series SD05H

Units: mm/ (Inch)



SD05H-12FS-C-S



Ordering Information

