



INDUSTRIAL FLUID POWER COMPONENTS  
AND SYSTEMS

HT & VT SERIES

## AC Motor Small Power Units



*SERIES VT- AC MOTOR*



*SERIES HT- AC MOTOR*

## Ordering Information



SERIES VT10- AC MOTOR

**HT2 - 1HP1 - G1.4 - Options**

Type/ Tank Size	HP	Phase	Flow (GPM@1800 rpm)	Options
HT0.8	1	1	.7	DV-Voltage Dump Valve (specify voltage & current type)
HT1.3	2	3	.9	D03-X_PorS Manifold (specify number of manifold stations & type of circuit: parallel or series)
HT2	3		1.4	
VT3			1.9	
VT10			3	
			3.5	

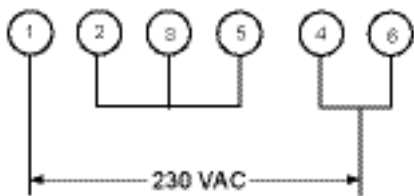
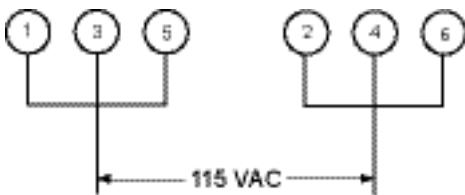
Rated @ 2500 PSI Max.



SERIES HT- AC MOTOR

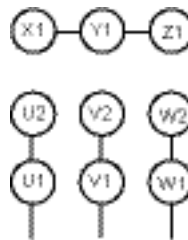
## Wiring

### SINGLE PHASE

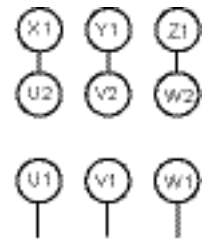


(CCW Rotation)

### THREE PHASE



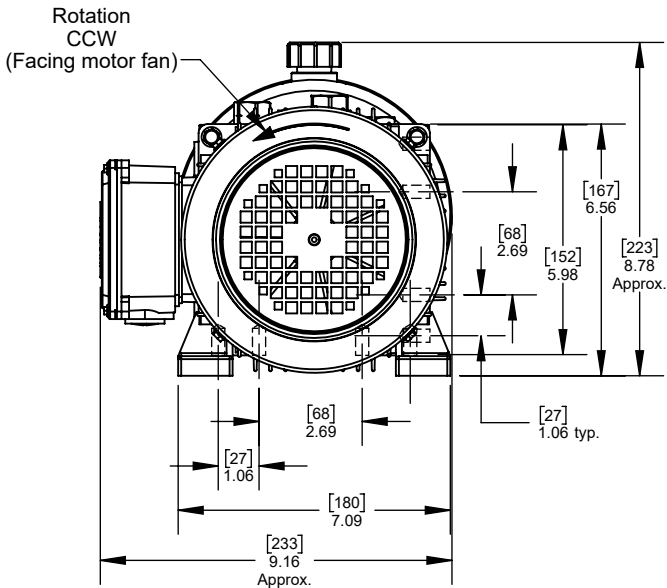
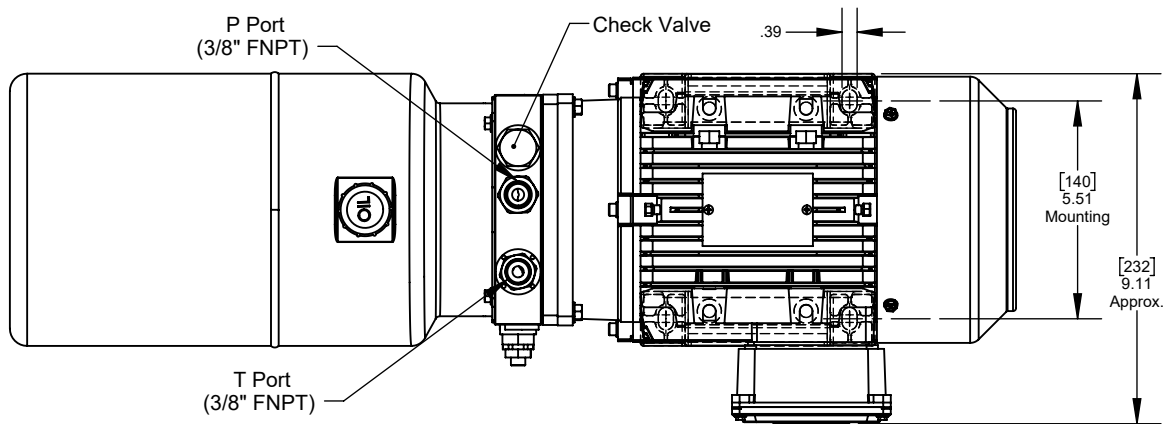
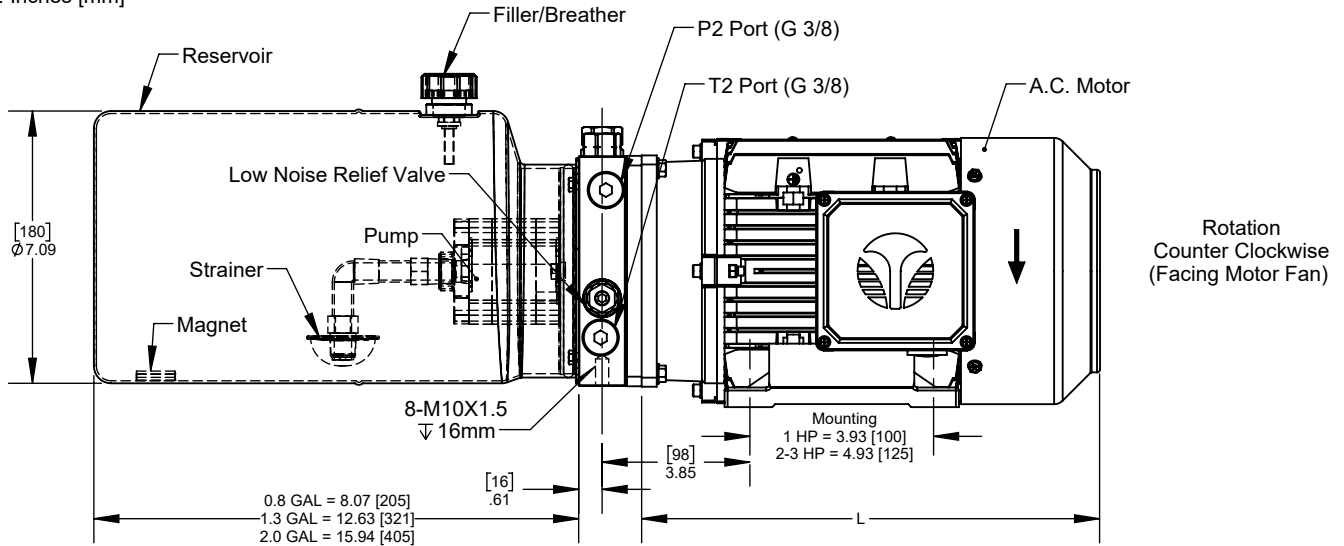
200  
208  
220  
230  
VAC



400  
415  
440  
460  
VAC

## Dimensional Data

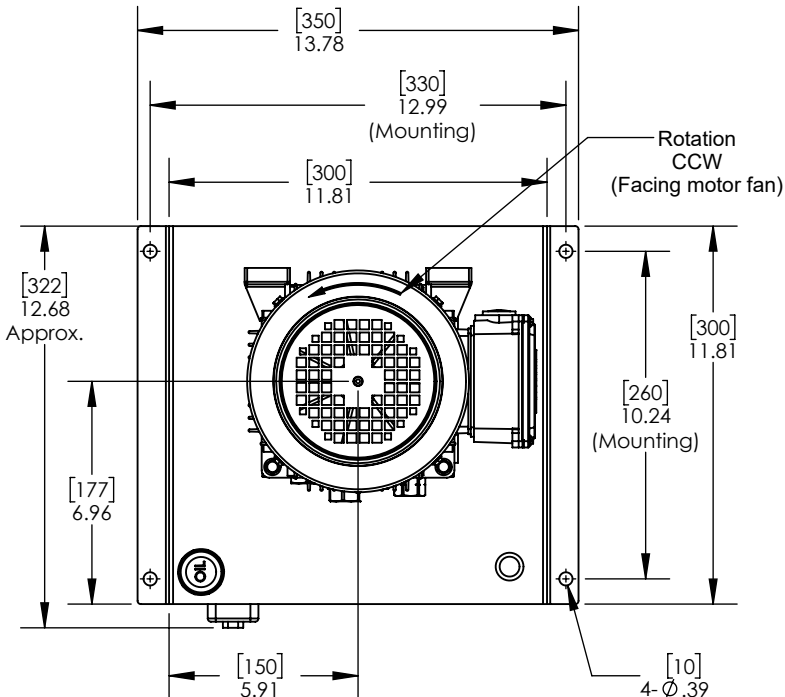
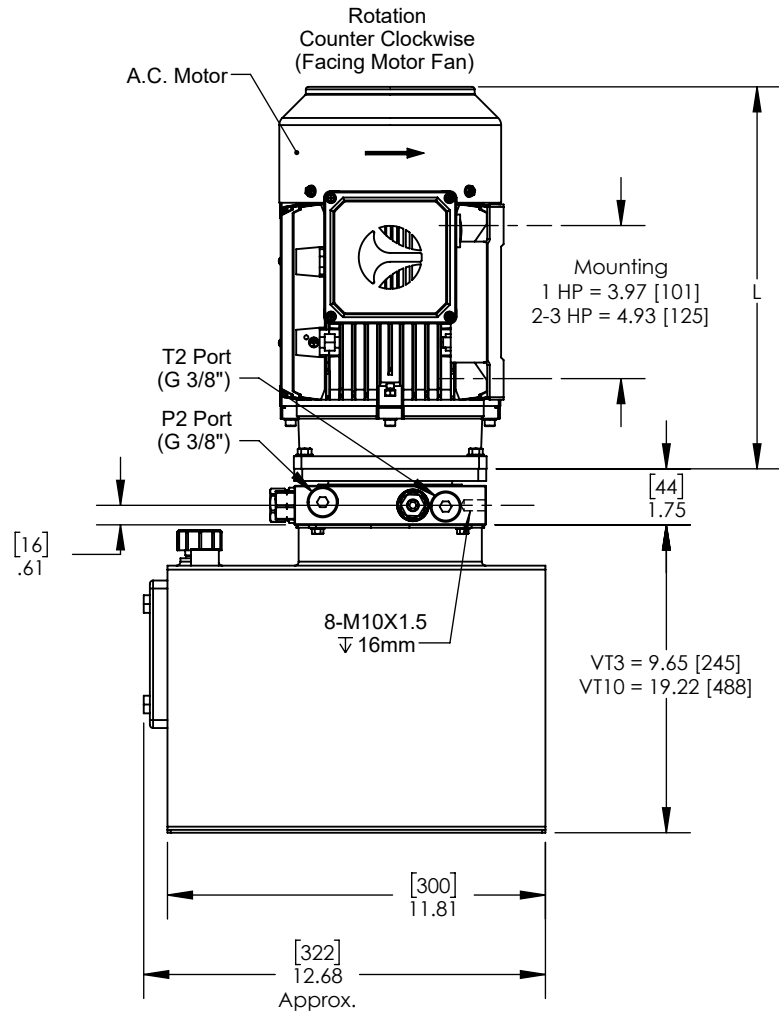
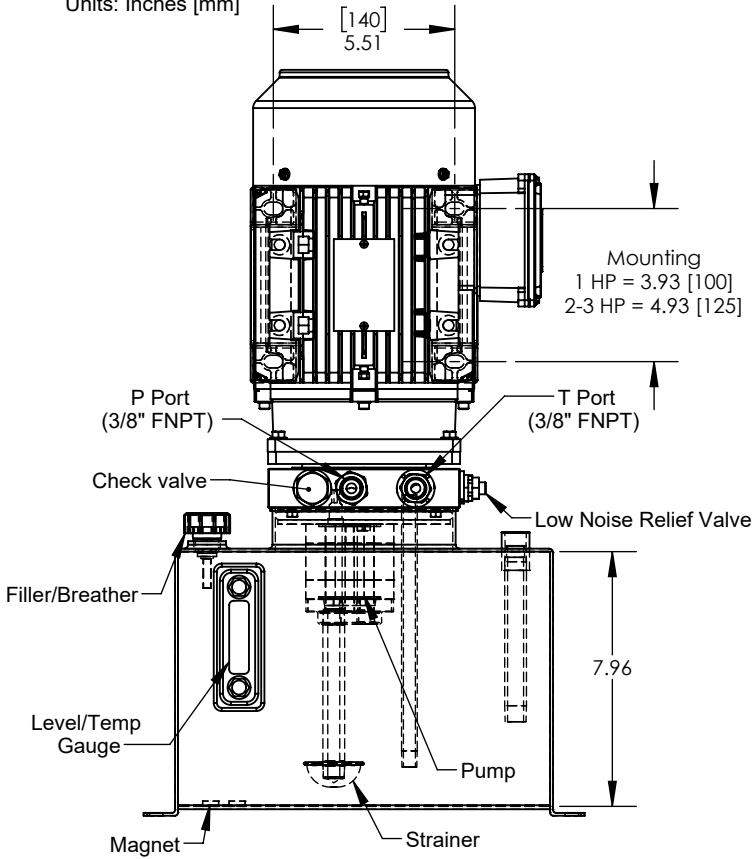
Units: Inches [mm]



MOTOR	POWER	PHASE	VAC @ 60Hz (1740 RPM)	VAC @ 50Hz (1425 RPM)	"L" DIM
1HP1	1HP	1	115/230	N/A	10.32 [262]
1HP3	1HP	3	230/460	200/400	10.92 [277]
2HP1	2HP	1	115/230	N/A	11.38 [289]
2HP3	2HP	3	230/460	200/400	11.92 [303]
3HP3	3HP	3	230/460	200/400	11.92 [303]

### Dimensional Data

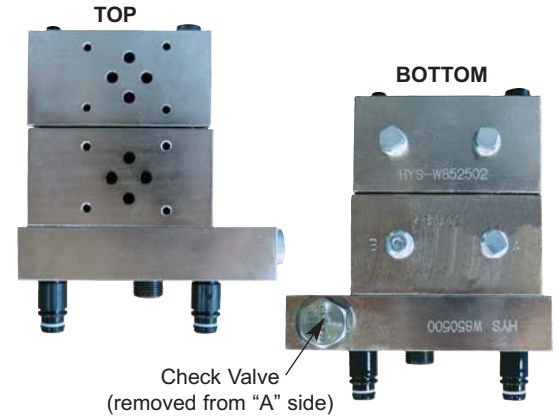
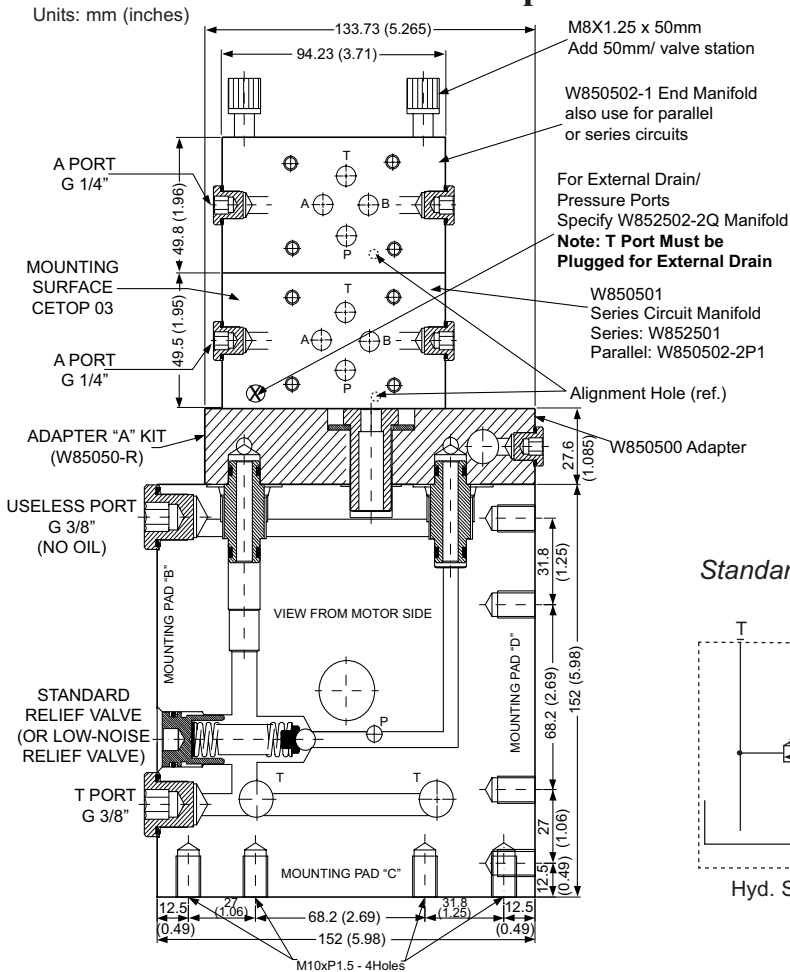
Units: Inches [mm]



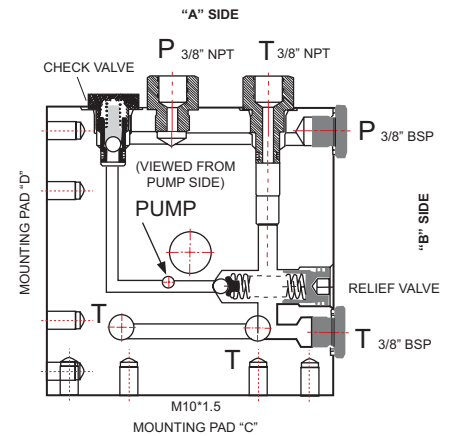
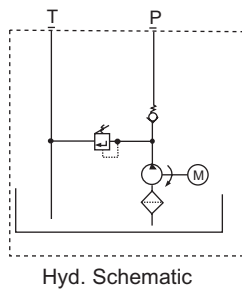
MOTOR	POWER	PHASE	VAC @ 60Hz (1740 RPM)	VAC @ 50Hz (1425 RPM)	"L" DIM
1HP1	1HP	1	115/230	N/A	10.32 [262]
1HP3	1HP	3	230/460	200/400	10.92 [277]
2HP1	2HP	1	115/230	N/A	11.38 [289]
2HP3	2HP	3	230/460	200/400	11.92 [303]
3HP3	3HP	3	230/460	200/400	11.92 [303]



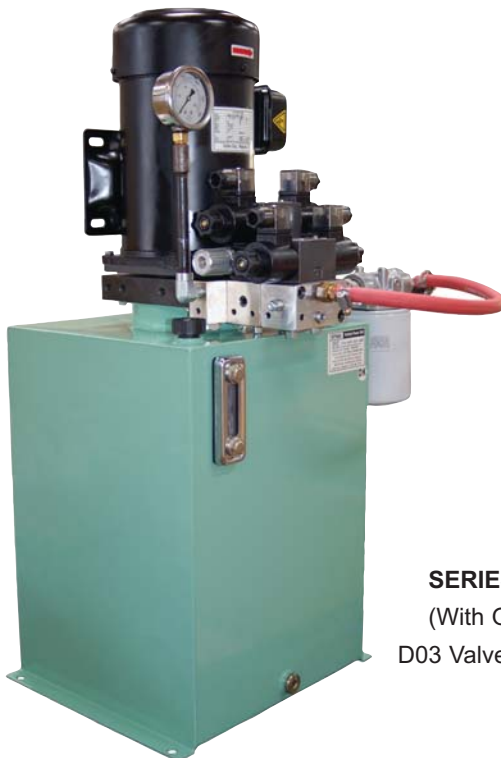
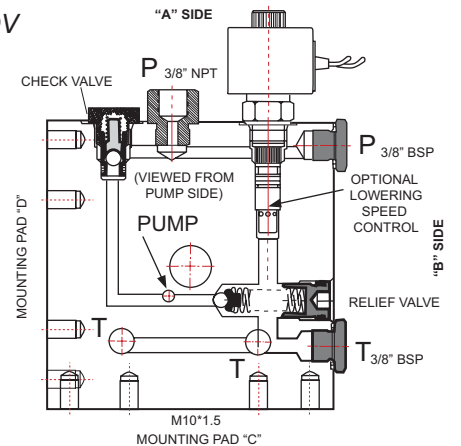
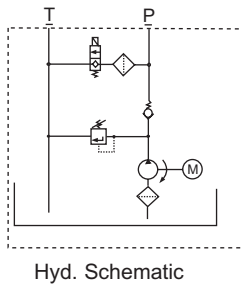
### Optional Manifolds/ Adapter



#### Standard Configuration



#### With Lowering Valve- DV



**SERIES VT10- AC MOTOR**  
(With Optional Return Filter,  
D03 Valves, Adapter & Manifolds)