



INDUSTRIAL FLUID POWER COMPONENTS
AND SYSTEMS

RRV SERIES

Remote Relief Valves



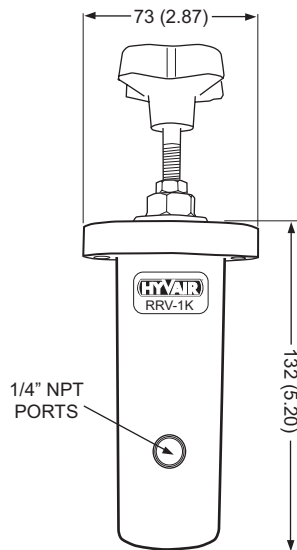
RRV-1K

Features/ Specifications

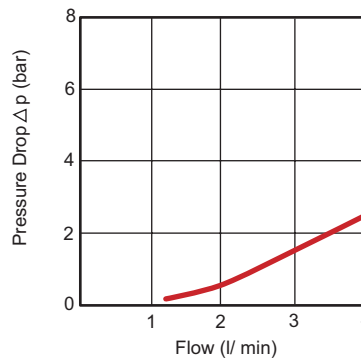
- Stable pressure function due to the damping of the moving inner parts
- Low Flow/ Low Pressure Differential
- Easy to Adjust Handle
- Quiet Operation
- Two different pressure setting ranges up to 250 bar
- **Operating Pressure Range:** Inlet (P Port) 0 - 250 bar
- **Ambient Temperature Range:** -20°C to +60°C
- **Fluid Temperature Range:** -18°C to +80°C
- **Viscosity Range:** 10 - 650 cSt; optimal 30cSt



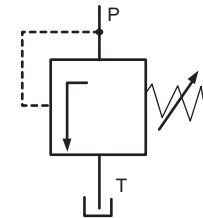
Dimensional Data



Flow Characteristics



Symbol



| Model | Pressure Range | Flow (gpm) |
|--------|-----------------|------------|
| RRV-1K | 100 - 1000 psi | 1 gpm |
| RRV-3K | 1500 - 3000 psi | 1 gpm |

The Hyvair valve series RRV is a direct operated pressure relief valve. It is designed to control system pressure according to the manual setting of the adjustment device. These reliable seat type valves consist mainly of seat, cone and pressure spring. Below the setting pressure the valve is leakage free. A damping spool maintains a stable function after the setting pressure is reached.

Ordering Information

