



INDUSTRIAL FLUID POWER COMPONENTS
AND SYSTEMS



PS40 SERIES

Pressure Switches



PS40-120

Standard Features

- Pneumatic Input
- Electric or Pneumatic Output
- High Number of Switching Cycles
- Intrinsically Safe Operation
- Aluminum Body

Specifications

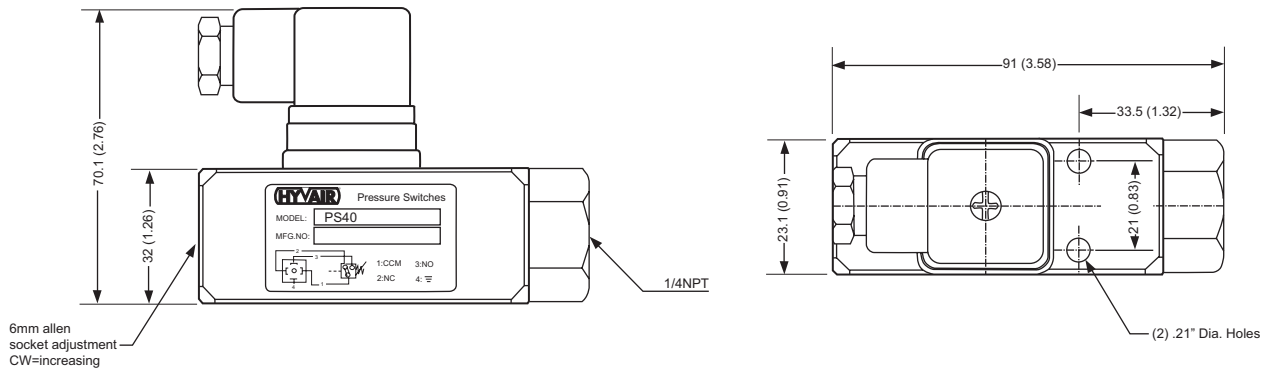
- Port Size: 1/4" NPT
- Operating Pressure: -14 to 435 psu (-1 to 30 bar)
- Ambient/ Fluid Temperature: 35 to 176°F (2 to 80°C)



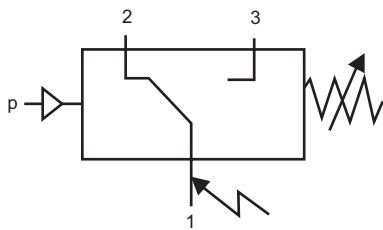
PS40-120

Dimensional Data

Units: mm (inches)



Switching Function

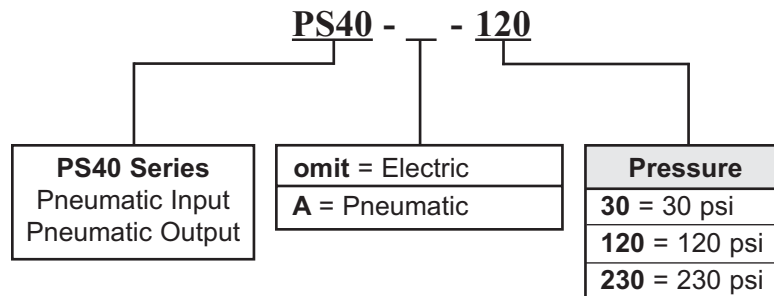


Switching Function acc. to
DIN EN 175301-803, form A:
Microswitch SPDT
Commutator

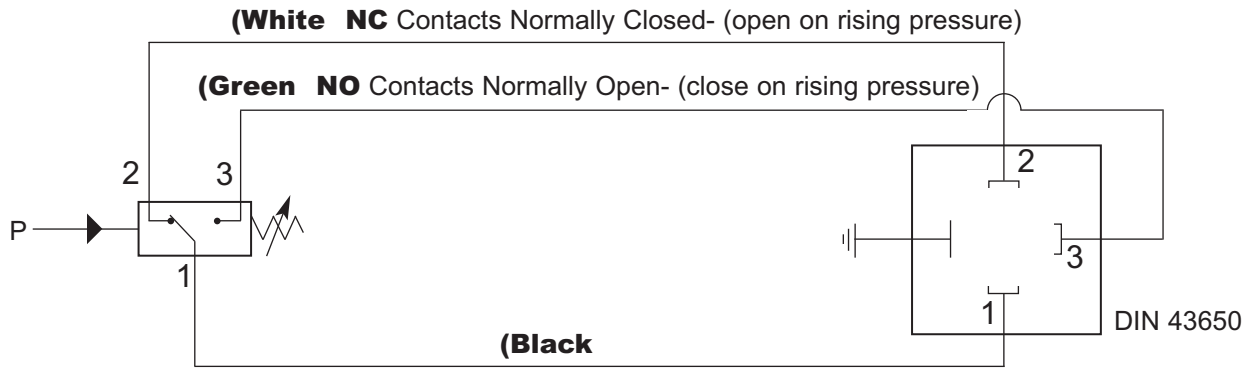
Terminals 1 - 3:
Contacts close on rising pressure

Terminals 1 - 2:
Contacts open on rising pressure

Ordering Information



Graphic Symbol



Specifications

Fluid:
Hydraulic, lubricating and light oils

Construction:
Piston actuated

Adjustment Range:
90 - 5200 psi (6 - 350 bar)

Ambient Temperature:
(130° to 175° F (-25° to 80° C))

Maximum Viscosity:
450 SSU (1000 mm²/s)

Maximum Switching Rate:
20 cycles/ min

Repeatability:
± 3%

Electrical Connection:
DIN 43650 Table A

Mounting:
Arbitrary

Switching Element:
Microswitch

Switch Ratings:

	Resistive	Inductive
14 VDC	3A	1.5A
30VDC	2A	1A
120VAC	3A	1A
240VAC	3A	0.5A

Hysteresis Diagrams (PSI)

