

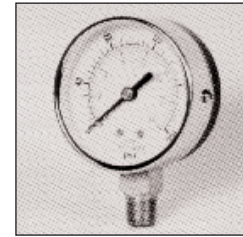
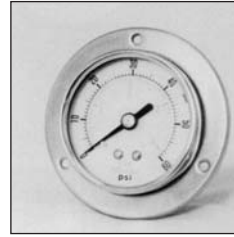
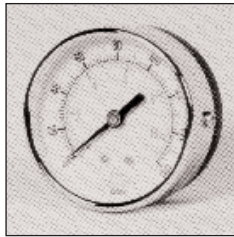
PNEUMATIC ACCESSORIES

CHECK, BALL, SHUTTLE, QUICK EXHAUST VALVES, ETC.



Pressure Gauges

1/8" thru 1/2" Ports



Ordering Information

HYV- 160 - 1.5 - 2 - N - CB - H

Pressure Range		Gauge Size (Dia)	Port Size	Mounting	Port Location	Series
-30Vac	160	1.5"	2- 1/8" MP	N- None	BM- Bottom	O- Hydraulic Service; Glycerin Filled, 304SS Case, Brass Internals
15	200	2"	4- 1/4" MP	P- Panel	CB- Center/ Back	U- Air Service; Dry, Non-Filled, Black Steel Case, Brass Internals
30	300	2.5"	8- 1/2" MP	U- U-Clamp	LB- Lower/ Back	H- Same as code U above but black face and white "Hyvair" logo
60	400	4"		W- Wall		
100	500	6"				

Breather Vents, Mufflers, Muffler Speed Control

1/8" thru 1" Connection



Breather Vents



Mufflers



Muffler Speed Control

Specifications

Maximum Pressure: 200 psi (13.8 bar)
 Maximum Temp: 35 - 300°F (1 - 149°C)
 Material:
 Body- Brass
 Element- Sintered Bronze
 40 micron

Units: mm/ (Inch)

Dimensional Data

Breather Vents

Model	Connection	Length	Hex
BV2	1/8"	12.7 (0.50)	11.2 (0.44)
BV4	1/4"	17.5 (0.69)	14.2 (0.56)
BV6	3/8"	21.1 (0.83)	17.5 (0.69)
BV8	1/2"	23.9 (0.94)	22.4 (0.88)
BV12	3/4"	25.9 (1.02)	26.9 (1.06)
BV16	1"	34.0 (1.34)	34.0 (1.34)

Mufflers

Model	Connection	Length	Hex
MF2	1/8"	23.4 (0.92)	11.2 (0.44)
MF4	1/4"	33.0 (1.30)	14.2 (0.56)
MF6	3/8"	40.1 (1.58)	17.5 (0.69)
MF8	1/2"	47.0 (1.85)	22.4 (0.88)
MF12	3/4"	55.6 (2.19)	30.2 (1.19)
MF16	1"	73.4 (2.89)	35.0 (1.38)

Muffler Speed Control

Model	Connection	Length	Hex
MSC2	1/8"	38.1 (1.50)	12.7 (0.50)
MSC4	1/4"	42.9 (1.69)	14.2 (0.56)
MSC6	3/8"	42.9 (1.69)	17.5 (0.69)
MSC8	1/2"	50.8 (2.00)	22.4 (0.88)
MSC12	3/4"	69.9 (2.75)	26.9 (1.06)
MSC16	1"	76.2 (3.00)	34.0 (1.34)

Ordering Information

MF - 4

Code	Description	Size	Connection
BV	Breather Vent	2	1/8"
MF	Muffler	4	1/4"
MSC	Muffler Speed Control	6	3/8"
		8	1/2"
		12	3/4"
		16	1"

