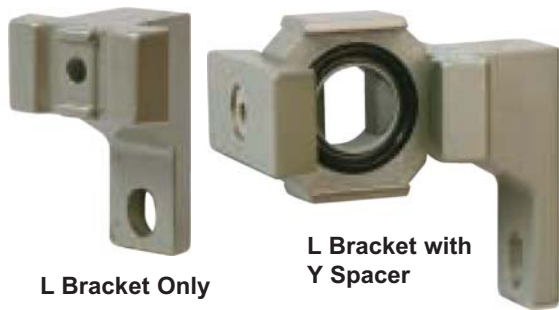


L-Type Bracket/ L-Type Bracket with Spacer



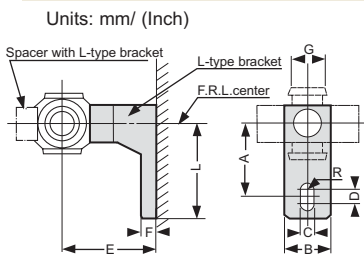
- L-Type Bracket is used with existing Y-Type Spacer and its hardware
- Spacer with L-Type Bracket is a complete accessory that includes the Y-Type Spacer "O" rings and screws and it will tie two Modular Units together and can be used for mounting the units.

Ordering Information

400 L or Y30L

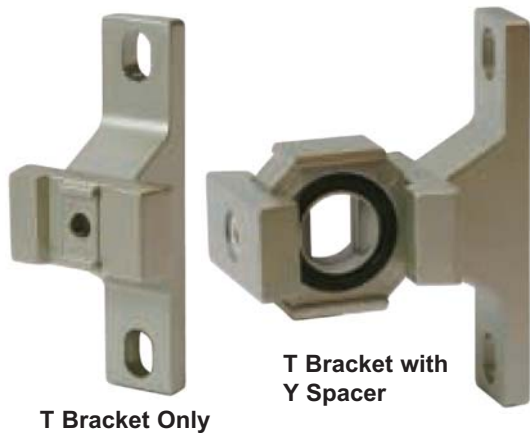
Series	Code	Description	Series	Code	Description
200L	L	"L" Bracket	Y20L	YL	"L" Bracket w/ Spacer
400L			Y30L		
800L			Y40L		

Dimensional Data



L-Type Bracket	Spacer with L-Type Bracket	A	B	C	D	E	F	G	R	L	Applicable Model
200L	Y20L	0.94	0.59	0.22	0.12	1.18	0.20	0.39	0.11	1.30	FRL200
400L	Y30L	1.38	0.63	0.28	0.16	1.61	0.28	0.43	0.14	1.77	FRL400
800L	Y40L	1.57	0.87	0.35	0.16	1.97	0.28	0.55	0.18	1.97	FRL800

T-Type Bracket/ T-Type Bracket with Spacer



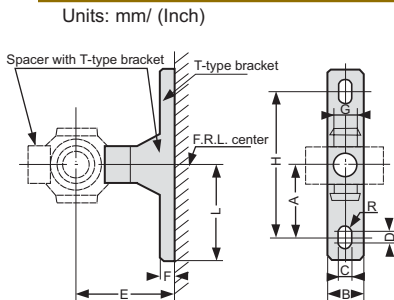
- T-Type Bracket is used with existing Y-Type Spacer and its hardware
- Spacer with T-Type Bracket is a complete accessory that includes the Y-Type Spacer "O" rings and screws and it will tie two Modular Units together and can be used for mounting the units.

Ordering Information

400 T or Y30T

Series	Code	Description	Series	Code	Description
200T	T	"T" Bracket	Y20T	YT	"T" Bracket w/ Spacer
400T			Y30T		
800T			Y40T		

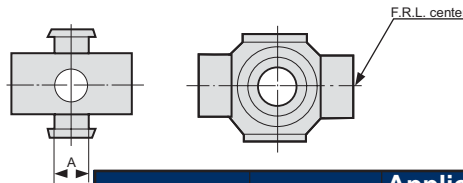
Dimensional Data



T-Type Bracket	Spacer with T-Type Bracket	A	B	C	D	E	F	G	H	R	L	Applicable Model
200T	Y20T	0.94	0.59	0.22	0.12	1.18	0.20	0.39	1.57	0.11	1.30	BL200
400T	Y30T	1.38	0.63	0.28	0.16	1.61	0.28	0.43	2.76	0.14	1.77	BL400
800T	Y40T	1.57	0.87	0.35	0.16	1.97	0.28	0.55	3.15	0.18	1.97	BL800

Y-Type Spacer Used for tying two modular components together

Dimensional Data



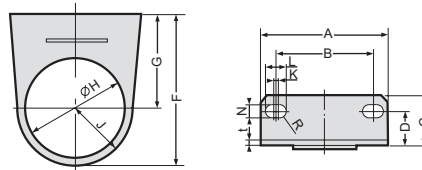
Model	A	Applicable Model
20Y	0.39	FRL202/ 04
30Y	0.43	FRL304/ 06
40Y	0.55	FRL408
50Y	0.55	FRL412
60Y	0.59	FRL516

Ordering Information

40 - Y

Series	Code	Description
20		
30	Y	"Y" Spacer
40		

Mounting Bracket for Regulators & Piggyback Units Used for mounting "R" and "B" units



Ordering Information

800 - LBBR

Series	Code	Description
400		
800	LBBR	Mounting Bracket for Regulator & Piggyback Units
1600		

Dimensional Data

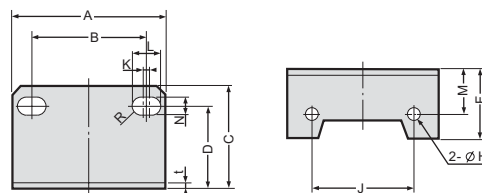
Model	A	B	C	D	F	G	H	J	K	L	N	R	t	Applicable Model
400LBBR	2.17	1.34	0.98	0.75	1.97	1.18	1.32	0.79	0.39	0.61	0.21	0.11	0.09	R400, B400
800LBBR	2.09	1.57	0.83	0.53	2.60	1.61	1.67	0.98	0.06	0.31	0.26	0.13	0.09	R800, B800
1600LBBR	2.76	2.13	1.06	0.71	3.15	1.97	2.07	1.18	0.08	0.41	0.33	0.17	0.09	R1600, B1600

Mounting Bracket for Filter and or Lubricator Used for mounting "F" or "L" units individually

Ordering Information

800 - LBFL

Series	Code	Description
400		
800	LBFL	Mounting Bracket for Filter or Lubricator
1600		



Dimensional Data

T-Type Bracket	A	B	C	D	F	H	J	K	L	M	N	R	t	Mounting Screw	Applicable Model
400LBFL	1.57	1.06	1.30	1.06	0.71	0.18	1.02	0.12	0.33	0.55	0.21	0.11	0.09	M4x8 Pan Hd	F/ L400
800LBFL	2.76	2.13	1.85	1.50	1.24	0.22	1.85	0.08	0.41	0.79	0.33	0.17	0.09	M5x10 SHCS	F/ L800
1600LBFL	3.54	2.60	2.52	2.05	1.69	0.26	2.56	0.08	0.51	1.18	0.43	0.22	0.13	M6x10 SHCS	F/ L1600