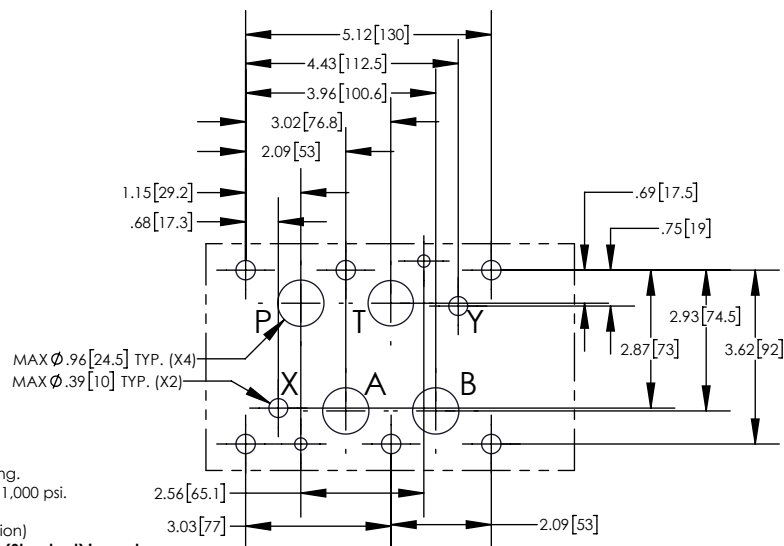
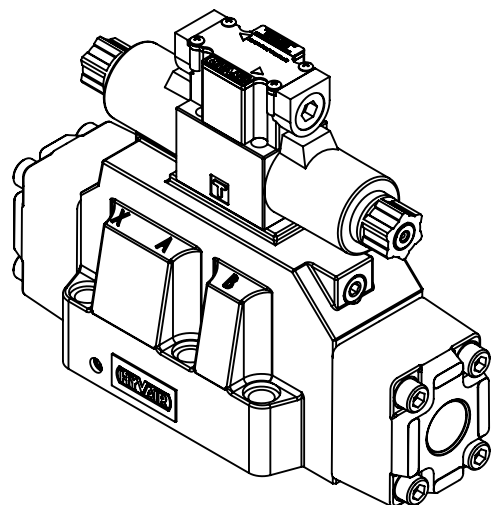
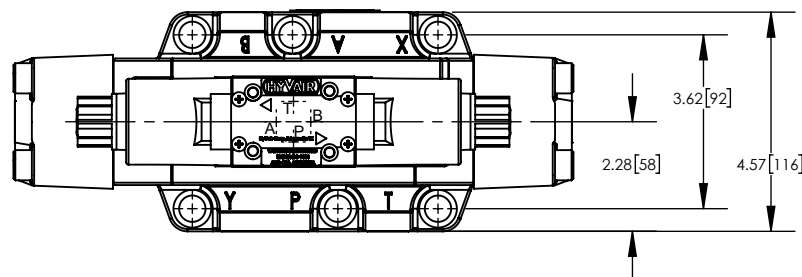
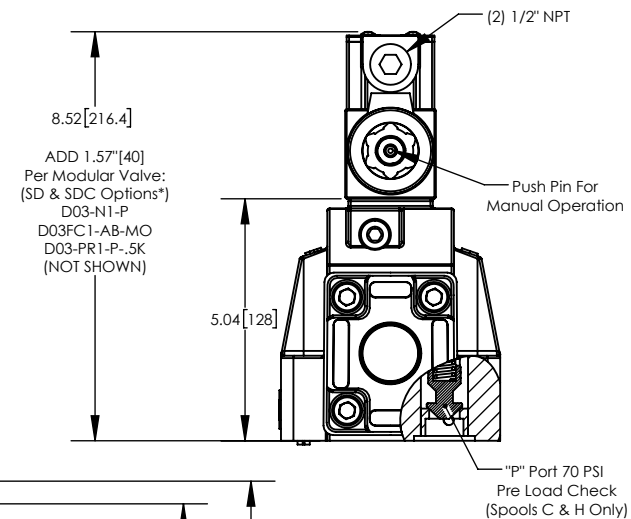


Mounting Bolt/O'Ring Information			
Bolt	Torque ft-lbs (Nm)	O'Ring (P,T,A,B)	O'Ring (X,Y)
M12x60-10.9	77.4 (105)	27mm I.D. x 3.5mm C.S.	17mm I.D. x 2.4mm C.S.



DETAIL FOR P/N:
D08S--**-35**
(D03S--**-35 Pilot Valve)**



31341 Friendship Dr.
 Magnolia, TX 77355
 P: (281) 259-7768
 F: (281) 259-7249
 sales@hyvair.com

SCALE: 1:4 UNITS: INCH [mm]

*Pilot choke valve (SC/SDC), D03-FC1-AB-MO- meter out flow control, provides softer shifting.
 Also consider additionally using D03-PR1-P-.5K- pressure reducing valve if system is above 1,000 psi.
Options:
 "EP" suffix for External Pilot (x-port connection) "ED" suffix for External Drain (y-port connection)
At least one of these options must be used on C & H spools unless internal Pre Load Check (Standard) is used.