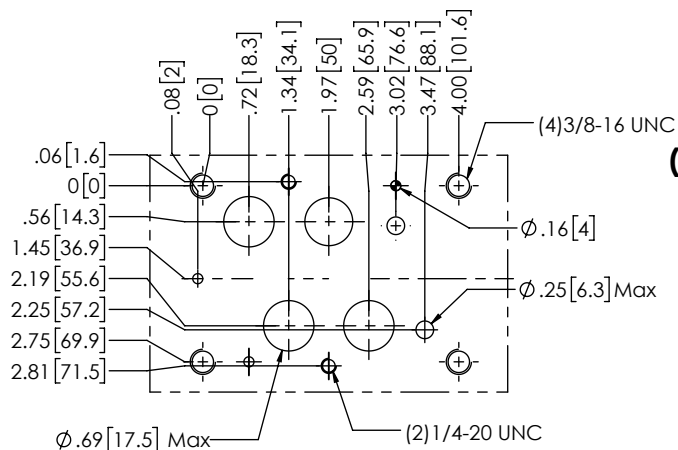
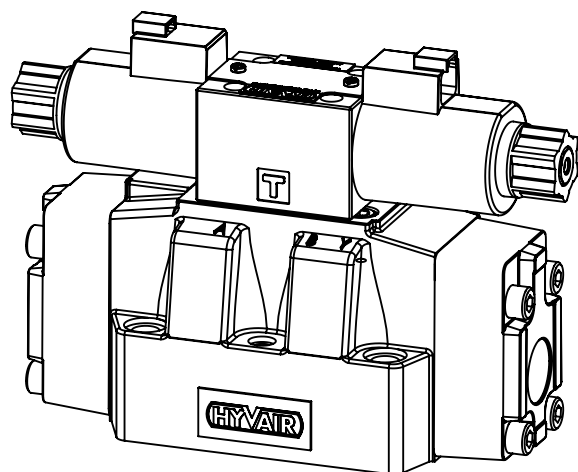
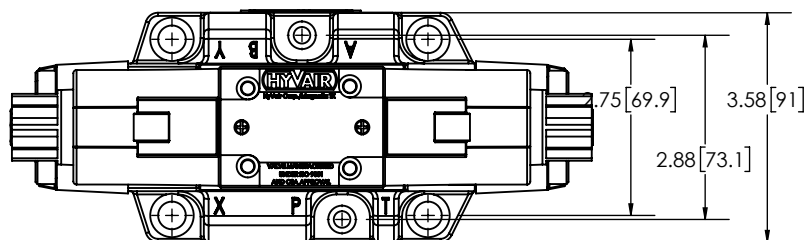
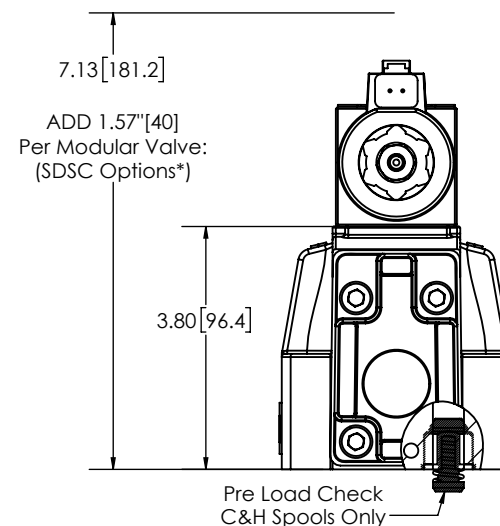
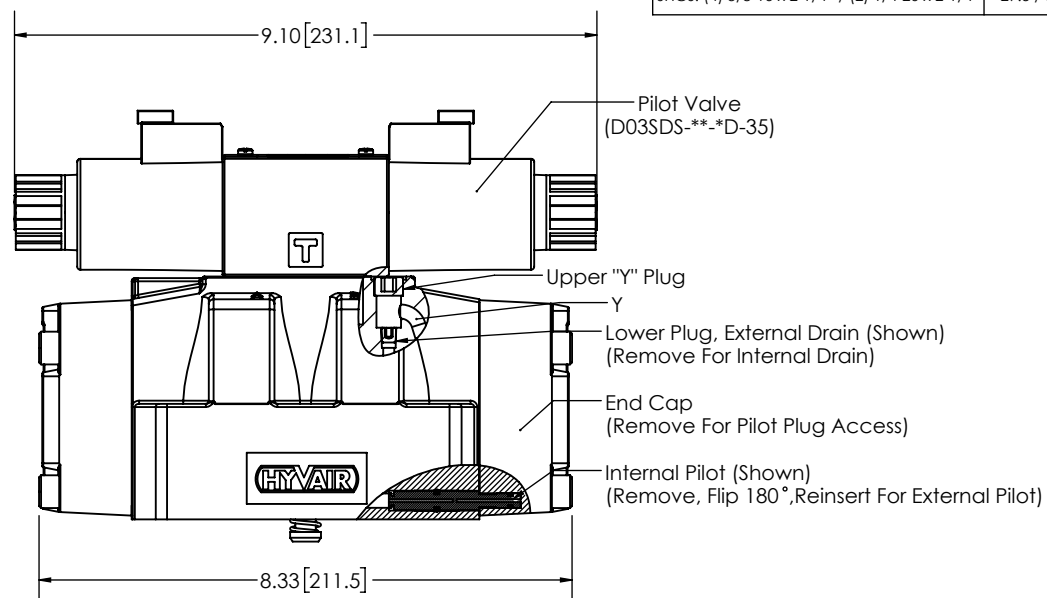


Mounting Bolt/O'Ring Information			
Bolts	Torque ft-lbs	O'Ring (P,T,A,B)	O'Ring (X,Y)
SHCS: (4) 3/8-16 x 2-1/4" / (2) 1/4-20 x 2-1/4"	29.5 / 5.9	22,22mm I.D. x 2.62mm C.S.	10,82mm I.D. x 1.78mm C.S.



DETAIL FOR P/N:
D07SDS--D-35**
(D03SDS--D-35 Pilot Valve)**

HYVAIR

31341 Friendship Dr.
Magnolia, TX 77355
P: (281) 259-7768
F: (281) 259-7249
sales@hyvair.com

SCALE: 1:3 UNITS: INCH [mm]

*Pilot choke valve (SDSC), D03-FC1-AB-MO- meter out flow control, provides softer shifting.
Also consider additionally using D03-PR1-P-5K- pressure reducing valve if system is above 1,000 psi.

Options:

"EP" suffix for External Pilot (x-port connection) "ED" suffix for External Drain (y-port connection)

At least one of these options must be used on C & H spools unless internal Pre Load Check (Standard) is used.