

A10V071/
A10VSO71

Specifications

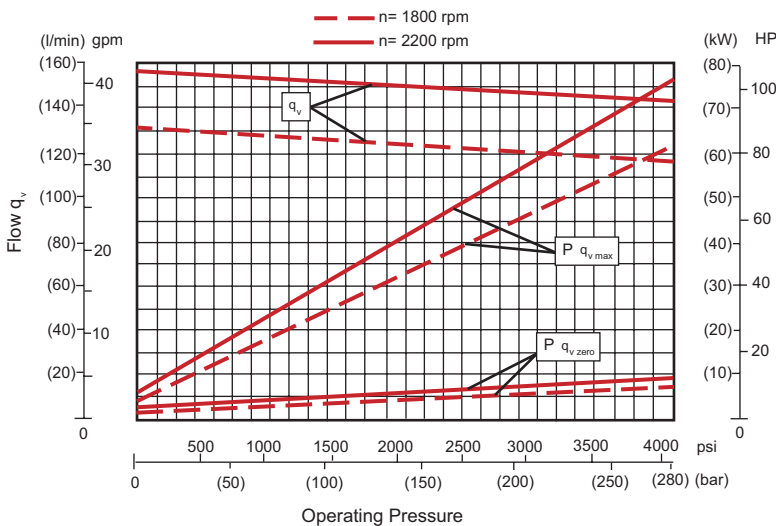
A10V071/ A10VSO71 45° (Series 31)

Working Pressure	4000 psi
Maximum Pressure	5000 psi
Maximum Speed	2200 rpm
Displacement per rev	4.33 cu-in (71.0 cc)
Flow @ 1800 rpm	33.8 gpm (128 lpm)
Maximum Torque	316 Nm (2797 in/lbs)
Weight	72.8 lbs (33 kgs)

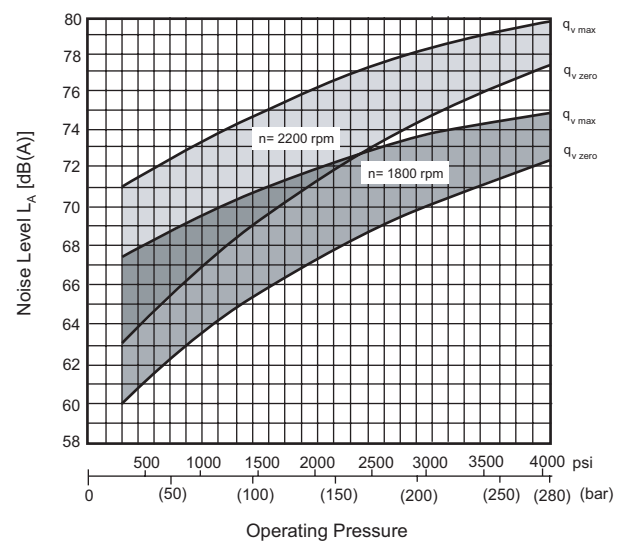
Performance Data

Typical performance curves based on ISO VG32 Oil @ 122°F, (50°C)

Pressure vs. Flow



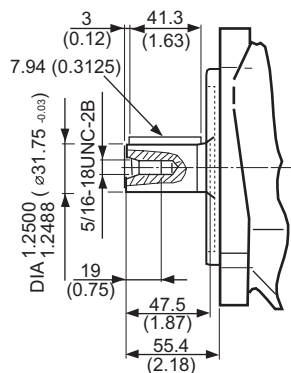
Noise Level



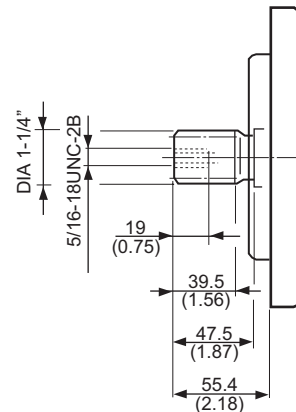
Shaft Ends

Units: mm (inches)

K Straight Keyed Shaft 1-1/4" dia.
SAE C 1.625" long w/ 5/16" key



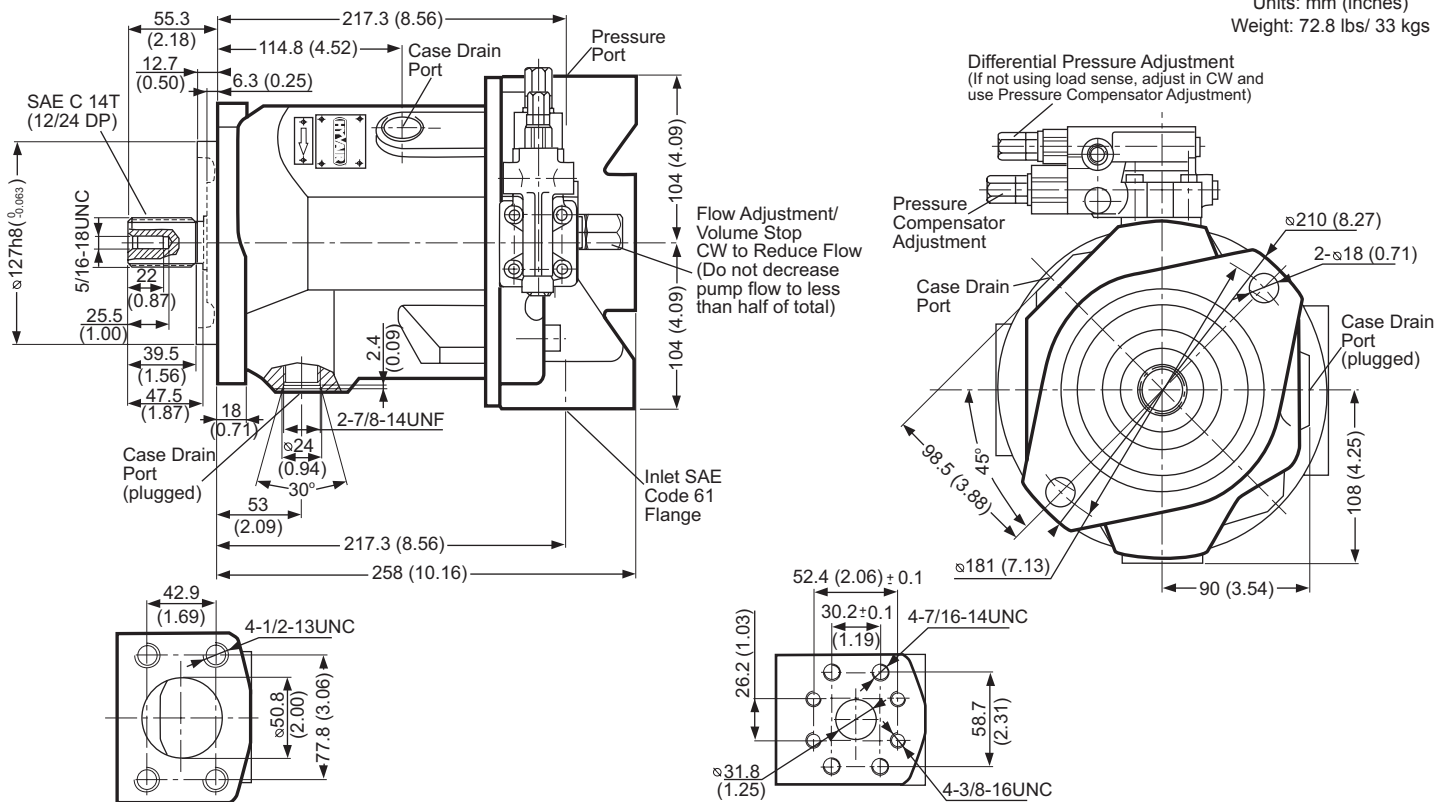
S Splined Shaft 1-1/4" dia.
SAE C 14T (12/24 DP)



Dimensional Data

A10VSO71DFR/31R-PSC62-N00 - (PCP33-4K-2CS-2)

Units: mm (inches)
Weight: 72.8 lbs/ 33 kgs



Ordering Information

A10VSO 71 DFR - 31 R - P K C 62 - N00

