

PCP33

### Specifications

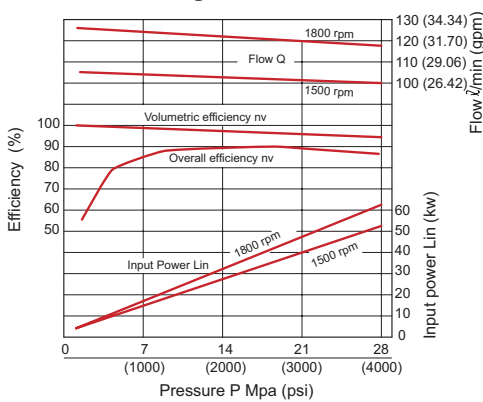
**PCP33** 1800 rpm, 33.2 gpm (at no load), 3000 psi max

Model	Pressure Range (psi)	Displacement per rev.	Flow @1800 rpm	Weight
PCP33-.5K-4CK-2	143-500	4.27 cu-in 70.0 cc	33.2 gpm (125.7 lpm)	81.7 lbs 37.0 kgs
PCP33-1K-4CK-2	286-1000			
PCP33-2K-4CK-2	500-2000			
PCP33-3K-4CK-2	500-3000			

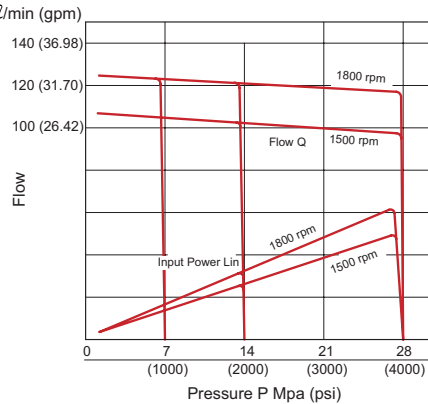
### Performance Data

Typical performance curves based on ISO VG32 Oil @ 120°F, (49°C)

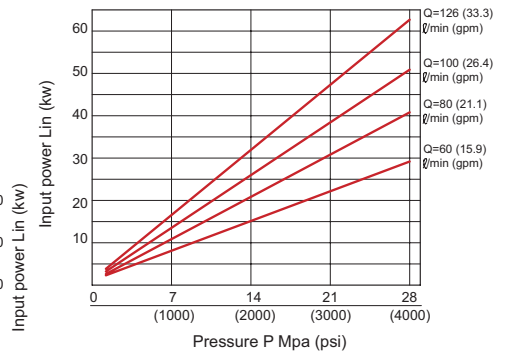
#### Efficiency Curves



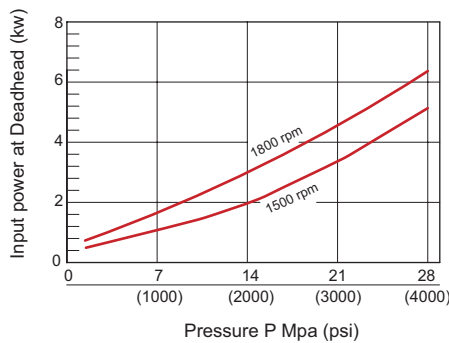
#### Pressure vs Flow



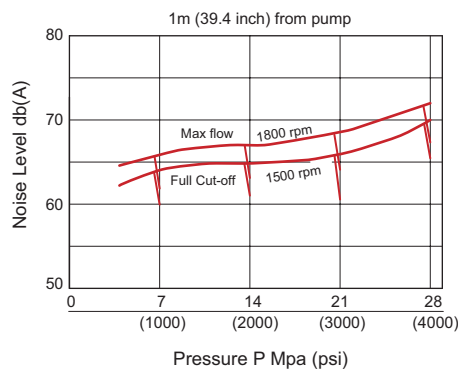
#### Power Input



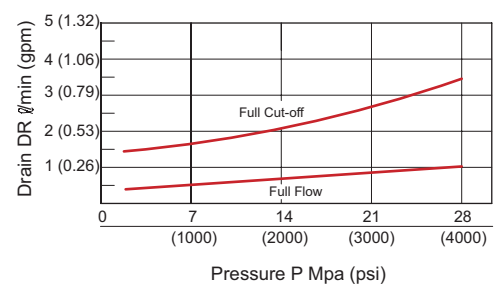
#### Deadhead Power



#### Noise Level

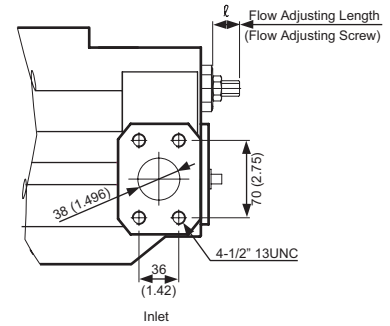
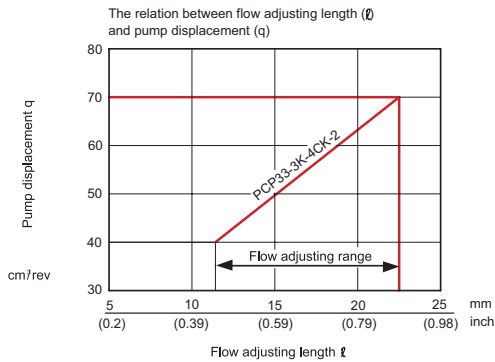
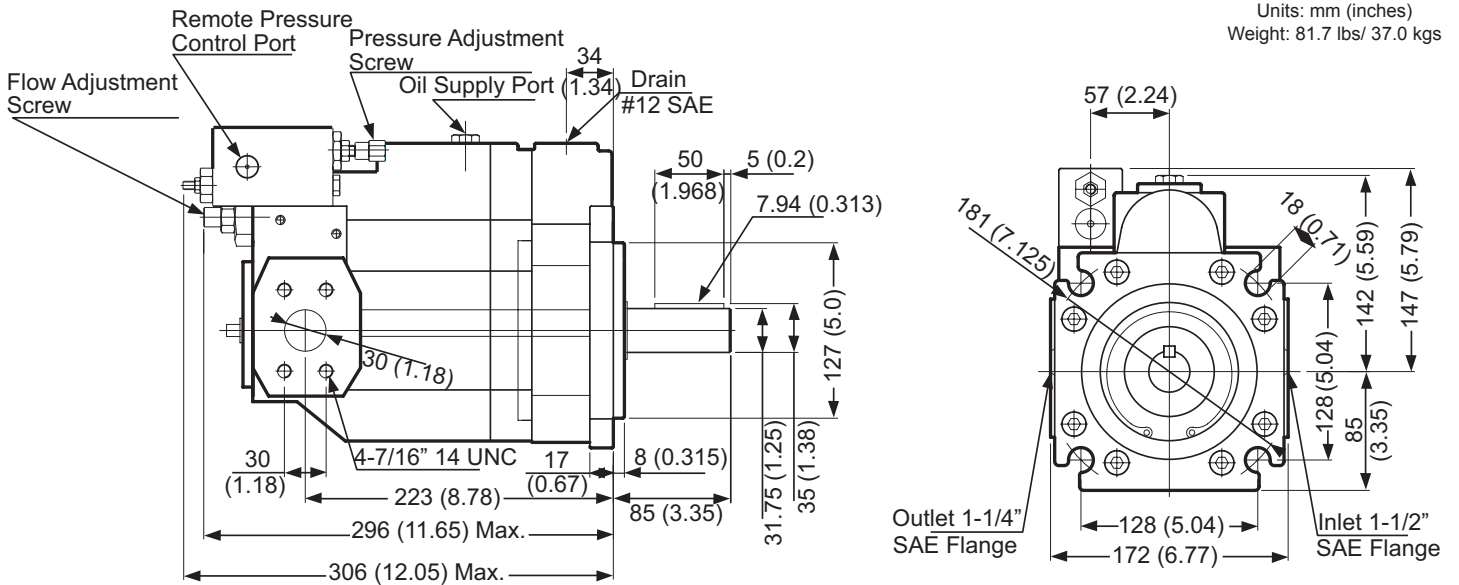


#### Drain Curve

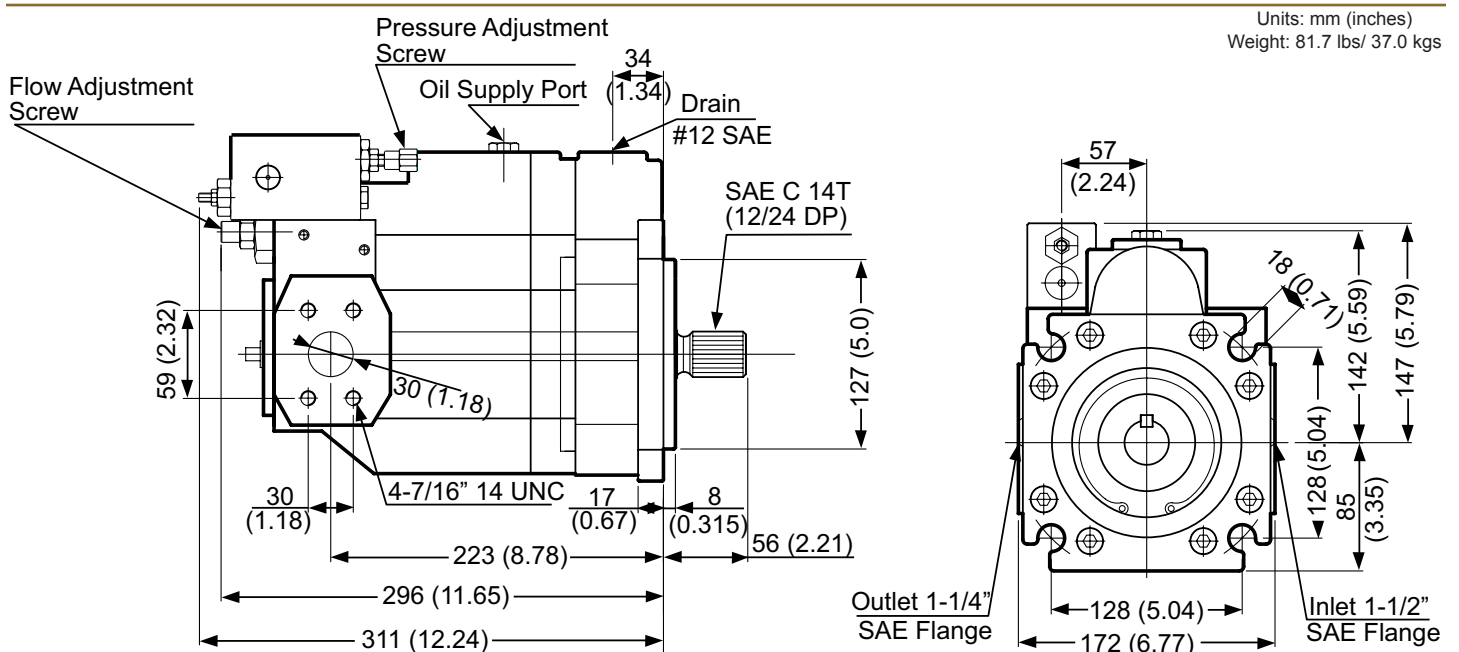


### Dimensional Data

#### PCP33-3K-4CK-2



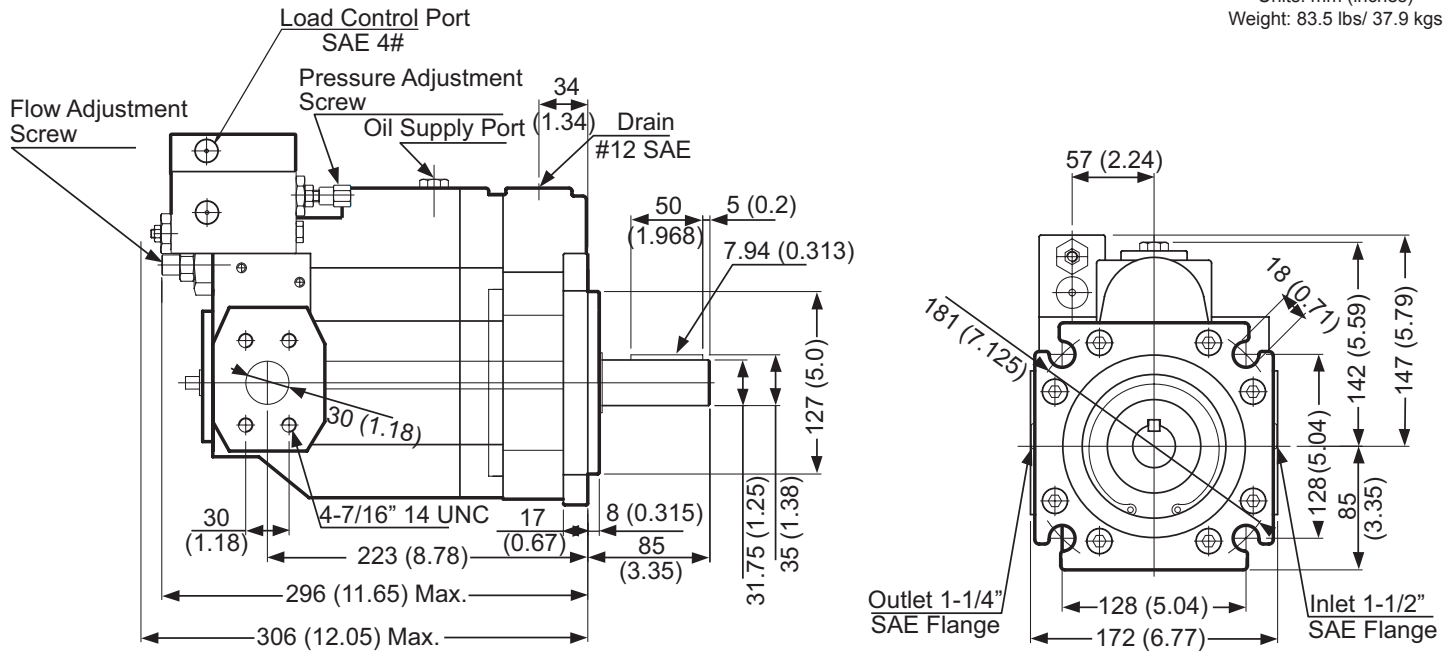
#### PCP33-3K-4CK-4CS-2



### Dimensional Data

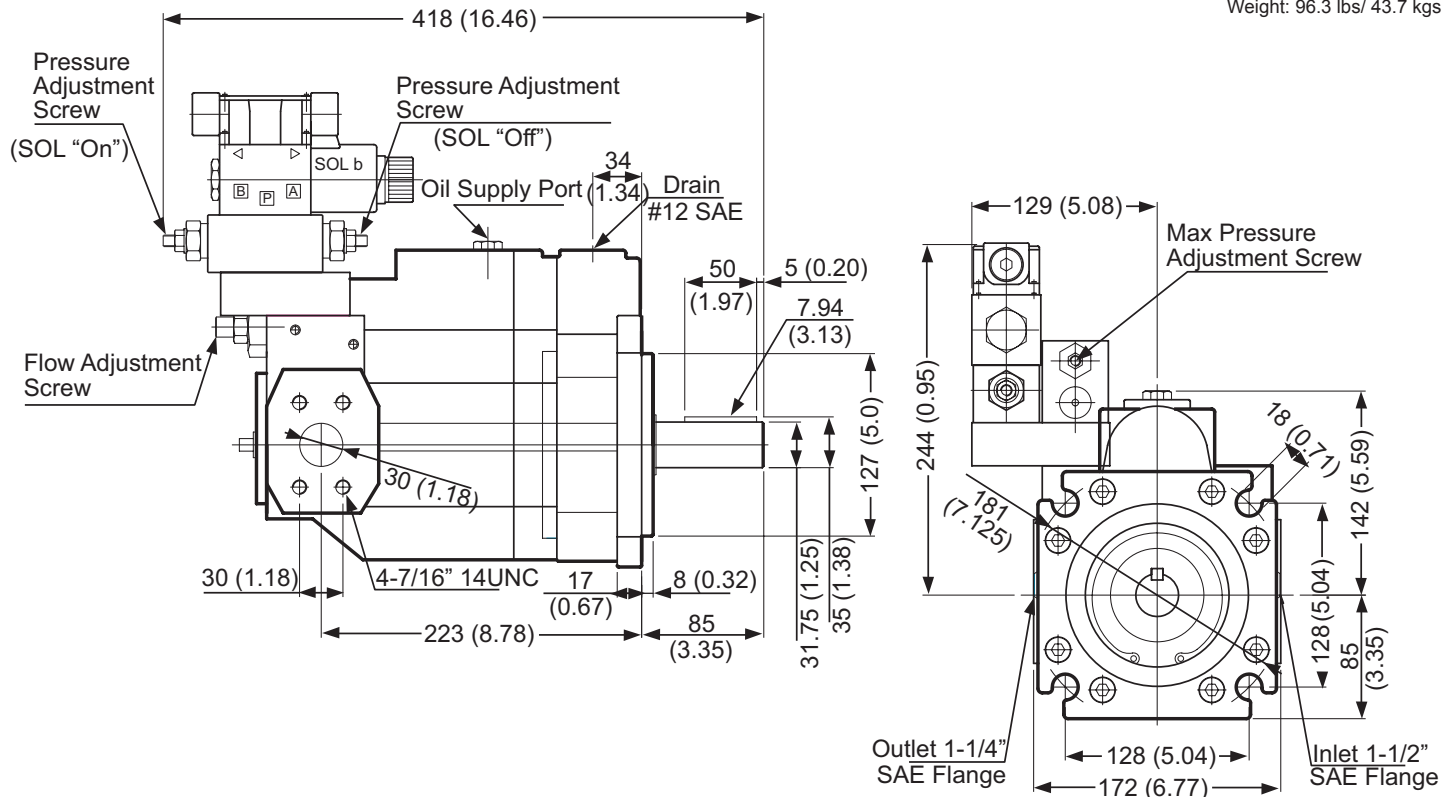
#### PCP33-3K-4CK-2-LS

Units: mm (inches)  
Weight: 83.5 lbs/ 37.9 kgs



#### PCP33-3K-4CK-2-2PSO

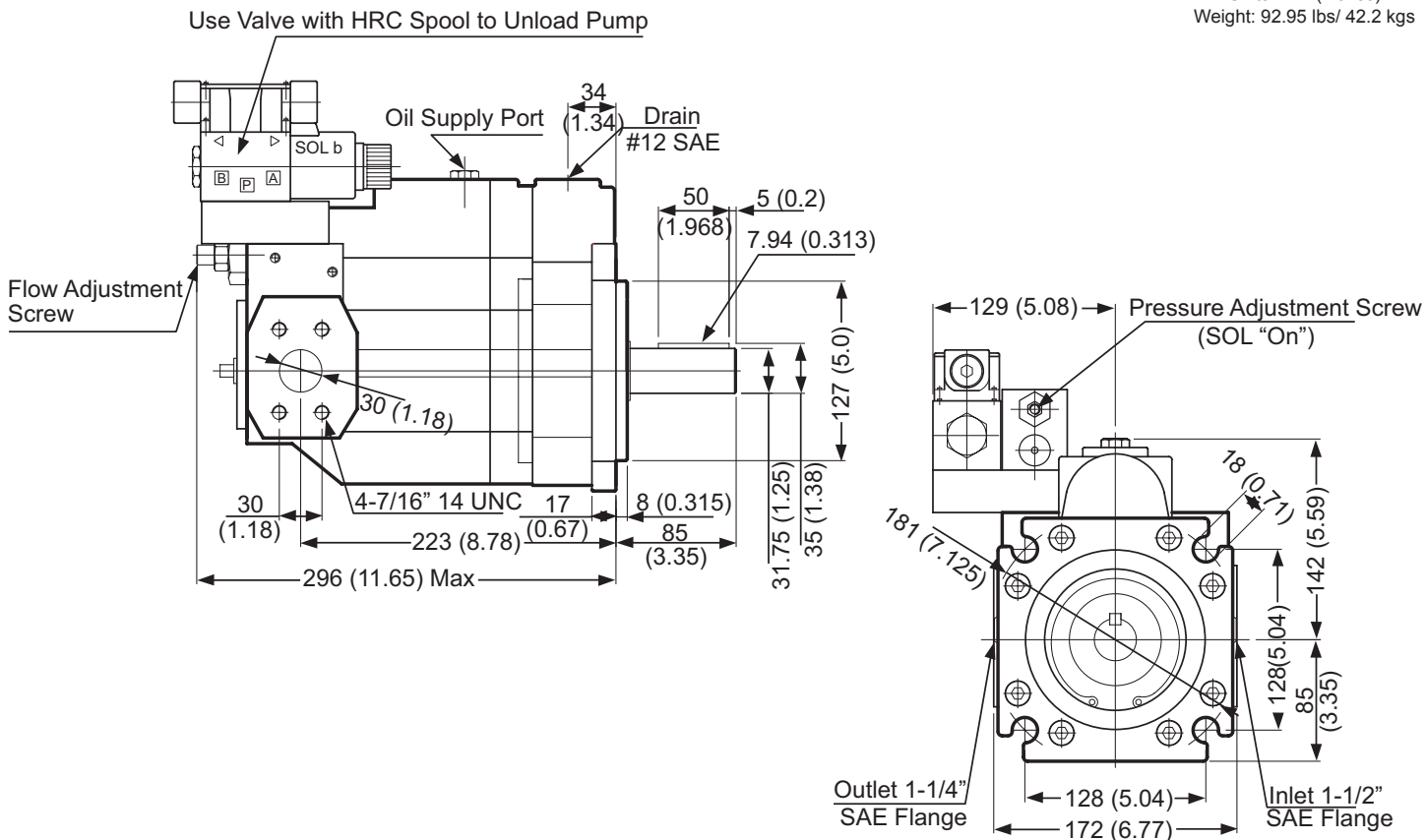
Units: mm (inches)  
Weight: 96.3 lbs/ 43.7 kgs



### Dimensional Data

#### PCP33-3K-4CK-2-SO

Units: mm (inches)  
Weight: 92.95 lbs/ 42.2 kgs



### Ordering Information

#### PCP33 - 3K - 4CK - 2 - LS

Note: Available right hand rotation (only)- viewed facing pump shaft

