



INDUSTRIAL FLUID POWER COMPONENTS
AND SYSTEMS



MD03 & MD05 SERIES

Hyvair Standard Manifolds



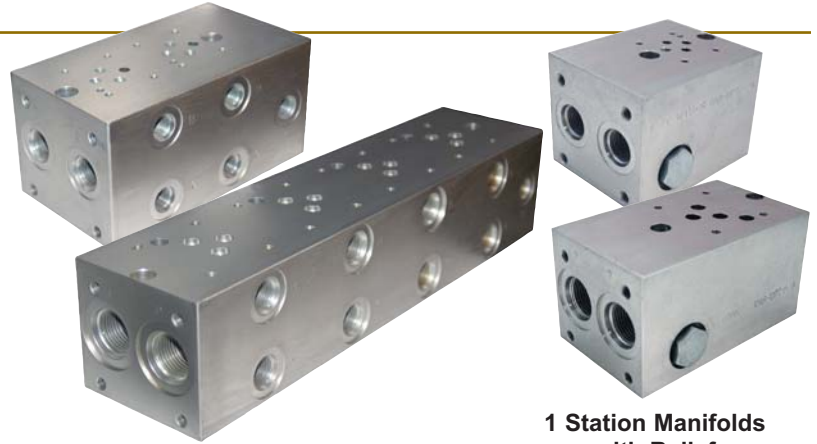
MD03-2S-6AB-8PT



MD05-4S-8AB-12PT

Features

- Intelligent Design:** Manifolds share same end mounting dimensions allowing manifolds to be joined together.
- Space Savings:** Manifold mounted circuits greatly reduce space requirements from in line mounted valves.
- Multiple Port Sizes:** Eliminates adapter fittings.



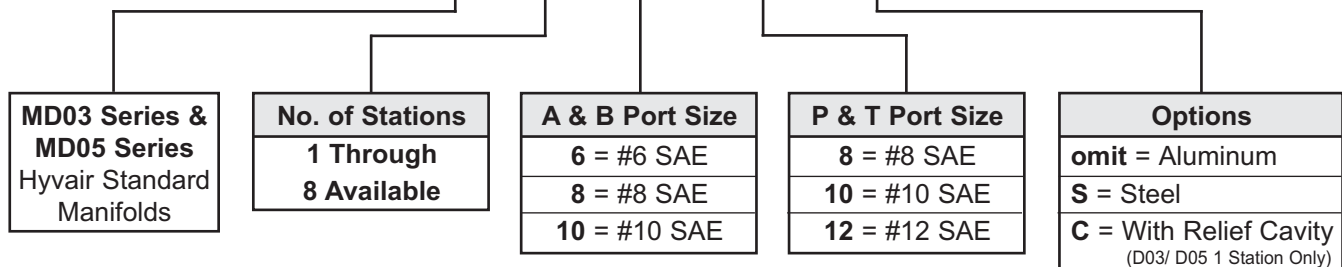
1 Station Manifolds with Relief

Specifications

Size	D03	D05
Mounting Surfaces: General Patterns		
Model Number	Std. A&B Ports MD03-*S-6AB-8PT	MD05-*S-8AB-12PT
	Big A&B Ports MD03-*S-8AB-10PT	MD05-*S-10AB-12PT
	Steel MD03-*S-8AB-12PT-S	MD05-*S-10AB-12PT-S
Mounting Surface	NFPA T3.5.1.MR1-F1984-03	T3.5.1.MR1-F1984-D05
	ISO ISO 4401-03	ISO 4401-05
Nominal Flow Rates	5 gpm (19 lpm)	12 gpm (45 lpm)
Material	Aluminum or Steel	
Maximum Pressure	Aluminum 3000 psi (210 bar) Steel 5000 psi (350 bar)	
Recommended Fluids	Petroleum Based Fluids- ISO VG32-68, Phosphate Ester, Most Vegetable Oils, Water Based Fluids to 40% Water	

Ordering Information

MD05 - 1 S - 10AB - 12PT - C





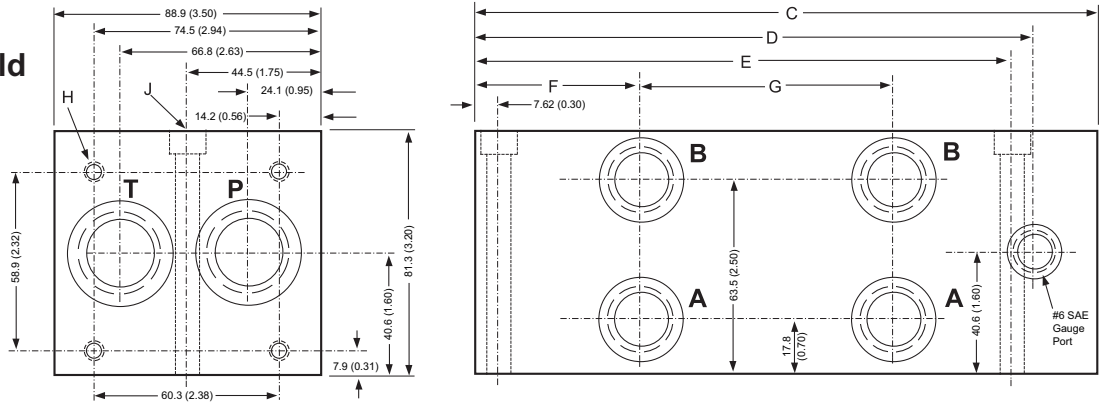
MD03 & MD05 Series

Hyvair Standard Manifolds- Parallel Circuit

Dimensional Data

Units: mm/ (Inch)

MD03 & MD05 Manifold



Model	No. of Stations	A & B Ports	P & T Ports	C	D	E	F	G	H	J
MD03-1S-6AB-8PT	1			105 (4.14)	85 (3.34)	64 (2.50)				
MD03-2S-6AB-8PT	2			160 (6.27)	139 (5.47)	118 (4.63)				
MD03-3S-6AB-8PT	3			213 (8.40)	193 (7.60)	172 (6.76)				
MD03-4S-6AB-8PT	4	#6 SAE, (9/16-18)	#8SAE (3/4-16)	267 (10.53)	248 (9.73)	226 (8.89)	38.6 (1.52)	54.1 (2.13)	5/16-18 UNC	Accepts 5/16- 18 SHCS X 3.25" Min. Length
MD03-5S-6AB-8PT	5			322 (12.66)	301 (11.86)	280 (11.02)				
MD03-6S-6AB-8PT	6			376 (14.79)	356 (14.00)	334 (13.15)				
MD03-7S-6AB-8PT	7			430 (16.92)	409 (16.12)	388 (15.28)				
MD03-8S-6AB-8PT	8			484 (19.05)	464 (18.25)	442 (17.41)				
MD03-1S-8AB-10PT-C	1			112 (4.41)	85 (3.34)	72 (2.83)				
MD03-1S-8AB-10PT	1			105 (4.14)	85 (3.34)	64 (2.50)				
MD03-2S-8AB-10PT	2			160 (6.27)	139 (5.47)	118 (4.63)				
MD03-3S-8AB-10PT	3			213 (8.40)	193 (7.60)	172 (6.76)				
MD03-4S-8AB-10PT	4	#8SAE (3/4-16)	#10 SAE (7/8-14)	267 (10.53)	248 (9.73)	226 (8.89)	38.6 (1.52)	54.1 (2.13)	5/16-18 UNC	Accepts 5/16- 18 SHCS X 3.25" Min. Length
MD03-5S-8AB-10PT	5			322 (12.66)	301 (11.86)	280 (11.02)				
MD03-6S-8AB-10PT	6			376 (14.79)	356 (14.00)	334 (13.15)				
MD03-7S-8AB-10PT	7			430 (16.92)	409 (16.12)	388 (15.28)				
MD03-8S-8AB-10PT	8			484 (19.05)	464 (18.25)	442 (17.41)				
MD03-1S-8AB-12PT-S	1			105 (4.14)	85 (3.34)	64 (2.50)				
MD03-2S-8AB-12PT-S	2			160 (6.27)	139 (5.47)	118 (4.63)				
MD03-3S-8AB-12PT-S	3			213 (8.40)	193 (7.60)	172 (6.76)				
MD03-4S-8AB-12PT-S	4	#8SAE (3/4-16)	#12 SAE (1-1/16-12)	267 (10.53)	248 (9.73)	226 (8.89)	38.6 (1.52)	54.1 (2.13)	5/16-18 UNC	Accepts 5/16- 18 SHCS X 3.25" Min. Length
MD03-5S-8AB-12PT-S	5			322 (12.66)	301 (11.86)	280 (11.02)				
MD03-6S-8AB-12PT-S	6			376 (14.79)	356 (14.00)	334 (13.15)				
MD03-7S-8AB-12PT-S	7			430 (16.92)	409 (16.12)	388 (15.28)				
MD03-8S-8AB-12PT-S	8			484 (19.05)	464 (18.25)	442 (17.41)				
MD05-1S-8AB-12PT	1			126 (4.95)	103 (4.05)	98 (3.85)				
MD05-2S-8AB-12PT	2			208 (8.20)	185 (7.30)	180 (7.10)				
MD05-3S-8AB-12PT	3			291 (11.45)	268 (10.55)	263 (10.35)				
MD05-4S-8AB-12PT	4	#8SAE (3/4-16)	#12 SAE (1-1/16-12)	373 (14.70)	351 (13.80)	345 (13.60)	54.6 (2.15)	82.6 (3.25)	5/16-18 UNC	Accepts 5/16- 18 SHCS X 3.25" Min. Length
MD05-5S-8AB-12PT	5			456 (17.95)	433 (17.05)	428 (16.85)				
MD05-6S-8AB-12PT	6			538 (21.10)	516 (20.30)	511 (20.10)				
MD05-8S-8AB-12PT	8			704 (27.70)	681 (26.80)	676 (26.60)				
MD05-1S-10AB-12PT-C	1			150 (5.90)	103 (4.05)	91 (3.58)				
MD05-1S-10AB-12PT	1			126 (4.95)	103 (4.05)	98 (3.85)				
MD05-2S-10AB-12PT	2			208 (8.20)	185 (7.30)	180 (7.10)				
MD05-3S-10AB-12PT	3			291 (11.45)	268 (10.55)	263 (10.35)				
MD05-4S-10AB-12PT	4	#10 SAE (7/8-14)	#12 SAE (1-1/16-12)	373 (14.70)	351 (13.80)	345 (13.60)	54.6 (2.15)	82.6 (3.25)	5/16-18 UNC	Accepts 5/16- 18 SHCS X 3.25" Min. Length
MD05-5S-10AB-12PT	5			456 (17.95)	433 (17.05)	428 (16.85)				
MD05-6S-10AB-12PT	6			538 (21.10)	516 (20.30)	511 (20.10)				
MD05-1S-10AB-12PT-S	1			126 (4.95)	103 (4.05)	98 (3.85)				
MD05-2S-10AB-12PT-S	2			208 (8.20)	185 (7.30)	180 (7.10)				
MD05-3S-10AB-12PT-S	3			291 (11.45)	268 (10.55)	263 (10.35)				
MD05-4S-10AB-12PT-S	4	#10 SAE (7/8-14)	#12 SAE (1-1/16-12)	373 (14.70)	351 (13.80)	345 (13.60)	54.6 (2.15)	82.6 (3.25)	5/16-18 UNC	Accepts 5/16- 18 SHCS X 3.25" Min. Length
MD05-5S-10AB-12PT-S	5			456 (17.95)	433 (17.05)	428 (16.85)				
MD05-6S-10AB-12PT-S	6			538 (21.10)	516 (20.30)	511 (20.10)				

D03 HIGH-FLOW